



# William Wallace

Arranger

United States (USA), Apex

## About the artist

**Personal web:** <http://www.easybyte.org>

## About the piece



**Title:** La Bourrée / #32 from Terpsichore [Easy Piano]  
**Composer:** Praetorius, Michael  
**Arranger:** Wallace, William  
**Licence:** Copyright © William Wallace  
**Instrumentation:** Piano solo  
**Style:** Mass; Choir; Sacred

## William Wallace on [free-scores.com](http://www.free-scores.com)

<http://www.free-scores.com/Download-PDF-Sheet-Music-oracle2world.htm>

- Download other works by this artist
- Contact the artist
- Write feedback comments
- Share your mp3 recording of this piece



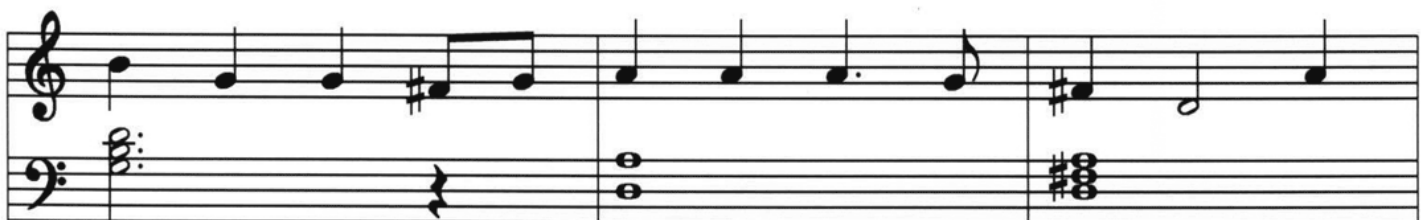
This work is not Public Domain. You must contact the artist for any use outside the private area.

## La Bourrée / #32 from Terpsichore

Michael Prätorius (1571-1621)

Arranged William Wallace

Copyright © 2006







The image displays three systems of musical notation, each consisting of a treble staff and a bass staff, typical for guitar. The notation is in a key with one sharp (F#) and a common time signature (C). The first system shows a melodic line in the treble staff and a bass line with a repeat sign. The second system continues the melody and bass line. The third system concludes the piece with a double bar line.

System 1:

- Treble staff: G4 (quarter), A4 (quarter), B4 (quarter), C5 (quarter), B4 (quarter), A4 (quarter), G4 (quarter), F#4 (quarter), E4 (quarter), D4 (half).
- Bass staff: G2 (quarter), A2 (quarter), B2 (quarter), C3 (quarter), B2 (quarter), A2 (quarter), G2 (quarter), F#2 (quarter), E2 (quarter), D2 (half).

System 2:

- Treble staff: G4 (quarter), A4 (quarter), B4 (quarter), C5 (quarter), B4 (quarter), A4 (quarter), G4 (quarter), F#4 (quarter), E4 (quarter), D4 (half).
- Bass staff: G2 (quarter), A2 (quarter), B2 (quarter), C3 (quarter), B2 (quarter), A2 (quarter), G2 (quarter), F#2 (quarter), E2 (quarter), D2 (half).

System 3:

- Treble staff: G4 (quarter), A4 (quarter), B4 (quarter), C5 (quarter), B4 (quarter), A4 (quarter), G4 (quarter), F#4 (quarter), E4 (quarter), D4 (half).
- Bass staff: G2 (quarter), A2 (quarter), B2 (quarter), C3 (quarter), B2 (quarter), A2 (quarter), G2 (quarter), F#2 (quarter), E2 (quarter), D2 (half).