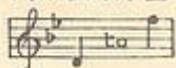


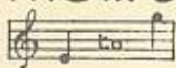
N^o 1 IN A^b



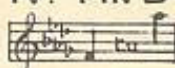
N^o 2 IN B^b



N^o 3 IN C



N^o 4 IN D^b



SUNG BY
M^r. EDWARD LLOYD.

THE HOLY CITY

SONG

THE WORDS BY

F. E. WEATHERLY

THE MUSIC COMPOSED, AND DEDICATED TO

M^{rs}. Philip H. Waterlow.

by

STEPHEN ADAMS.

Price 2/6 net

A SPECIAL EDITION OF THIS SONG IS PUBLISHED IN B^b WITH GERMAN WORDS.

ORGAN OR HARMONIUM ACCOMPANIMENT (AD LIB) PRICE 9^d
CHORUS PARTS (IN C ONLY) PRICE 5^d, OR IN TONIC SOLFA, PRICE 3^d
AN ORCHESTRAL ACCOMPANIMENT IS PUBLISHED IN B^b

TRANSCRIPTION FOR THE PIANOFORTE BY CHARLES GODFREY, JUN^r PRICE 2/6 NET
TRANSCRIPTION FOR THE ORGAN BY MYLES B. FOSTER PRICE 2/6 NET
THE HOLY CITY, ARRANGED FOR VIOLIN AND PIANO BY W. HENLEY PRICE 2/6 NET

BOOSEY & CO., LTD.

Sole Selling Agents:

Boosey & Hawkes (Aust.) Pty. Ltd.

250 PITT STREET, SYDNEY

RONALD MARBTON'S MUSIC STORE
5 BAY STREET, ROCKDALE.

THE HOLY CITY.

LAST night I lay a sleeping,
There came a dream so fair,
I stood in old Jerusalem
Beside the temple there.
I heard the children singing,
And ever as they sang,
Methought the voice of Angels
From Heaven in answer rang:-
"Jerusalem! Jerusalem!
Lift up your gates and sing,
Hosanna in the highest,
Hosanna to your King!"

And then methought my dream was chang'd,
The streets no longer rang
Hush'd were the glad Hosannas
The little children sang;
The sun grew dark with mystery,
The morn was cold and chill,
As the shadow of a cross arose
Upon a lonely hill.
"Jerusalem! Jerusalem!
Hark! how the Angels sing,
Hosanna in the highest,
Hosanna to your King."

And once again the scene was chang'd,
New earth there seem'd to be,
I saw the Holy City
Beside the tideless sea;
The light of God was on its streets,
The gates were open wide,
And all who would might enter,
And no one was denied.
No need of moon or stars by night,
Or sun to shine by day,
It was the new Jerusalem
That would not pass away.
"Jerusalem! Jerusalem!
Sing, for the night is o'er,
Hosanna in the highest,
Hosanna evermore!"

FREDERIC. E. WEATHERLY.

THE HOLY CITY.

Words by
F. E. WEATHERLY.

Music by
STEPHEN ADAMS.

Andante Moderato.

VOICE.

PIANO.

Last night I lay a sleep-ing, There came a dream so fair, I

stood in old Je - ru - sa - lem Be - side the tem - ple there. I

heard the chil - dren sing - ing, And e - ver as they sang, Me -

p

_thought the voice of Ao - gels From Heav'n in an - swer rang; Me -

mf cre - - - - - scen - - - - - do

cantabile

thought the voice of Ao - - - - - gels From

f

rall:

Heav'n in an - - - - - swer rang, - Je - -

dim:

a tempo

ra - sa - lem! Je - ru - sa - lem! Lift up your gates and

p *cres.*

sing, Ho - san - na in the high - est! Ho -

mf *f* *colla voce*

a tempo

san - na..... to your King!

ff

And

dim.

then me thought my dream was chang'd, The streets no long - er rang,

Hush'd were the glad Ho - san - nas The lit - tle chil - dren sang. The

sun grew dark with mys - te - ry, The morn was cold and chill, As the

sha - dow of a cross a - rose Up - on a lone - ly hill, As the

cre - - - - - scen - - - - - do

The Holy City.

(H. 704)

cantabile *rall:*

sha - dow of a cross a - rose Up - on a lone - ly

a tempo

bill. Je - ru - sa - lem! Je - ru - sa - lem!

Hark! how the An - gels sing, Ho - san - na in the

cres. *mf*

high - est, Ho - san - na..... to your King.

f *colla voce*

a tempo

The piano introduction consists of two staves. The right hand plays a series of chords and moving lines, while the left hand provides a rhythmic accompaniment with chords and eighth notes. The music is in a key with two flats (B-flat major or D-flat minor) and a 3/4 time signature. Dynamics include *ff* (fortissimo) and *dim.* (diminuendo).

affret. poco a poco

And once again the scene was chang'd, New earth there seem'd to be, I

The first system of the vocal and piano accompaniment. The vocal line is on a single staff, and the piano accompaniment is on two staves. The piano part features a steady accompaniment with some melodic lines in the right hand. Dynamics include *pp* (pianissimo).

saw the Ho - ly Ci - ty Be - side the tide - less sea; The

The second system of the vocal and piano accompaniment. The vocal line continues with the lyrics. The piano accompaniment provides harmonic support with chords and moving lines. Dynamics include *pp* (pianissimo).

light of God was on its streets, The gates were o - pen wide, And

cre - - - - - scen - - - - - do

The third system of the vocal and piano accompaniment. The vocal line concludes with the lyrics. The piano accompaniment features a melodic line in the right hand and a rhythmic accompaniment in the left hand. Dynamics include *pp* (pianissimo).

The Holy City.

(H. 704)

cantabile

all who would might en - - - ter, And

rall:

no one was de - - nied. No

dim: *p*

a tempo

need of moon or stars by night, Or

p

sun to shine by day, It

cre - - cen - - do

affret.

was the new Je - - ru - - sa - lem That

allargando *grandioso*

would not pass a - - way, It was the new Je -

cre - - - - - scen - - - - - do

rull:

- ru - sa - lem That would not pass a - way. "Je -

a tempo

- ru - - - sa - lem! Je - - - ru - - - sa - lem!

Sing for the night is o'er! Ho - san - na in the

cres. *mf*

high - est, Ho - san - na for e - ver - more! Ho -

f

- san - na in the high - est, ... Ho - san - na for e - ver -

ad lib. *f* *colla voce*

- more!

ff

BOOSEY & CO.'s New and Standard Songs and Duets.

PRICE, 2/6 EACH NET.

The Compass of the first Key only is given: from this the Compass of the other Keys can be readily found.

| Song by | | Compass of the first Key only | | Song by | | Compass of the first Key only | |
|--|---------|---|------------|---|---------|--|------------|
| STEPHEN ADAMS TWORA, D, E, F, G | A to D | MICHAEL HEAD OVER THE RIM OF THE MOON (3/6) | Low & high | KENNEDY RUSSELL WHY SHOULD I? A, B, C | A to D | WILFRID SANDERSON HARLEQUIN, A, B, C (minor) | A to E |
| FRANCES ALLITSYN THERE'S A LAND, D, E, F, G | A to D | MONEY O! G, B (minor) | D to F# | HARLEQUIN , A, B, C (minor) | A to E | EASTER FLOWERS , A, B, C | By to E |
| ROBERT BATTEN APRIL MOON, B, C, D | By to B | GEORGE HENSOHEL SPRING, F & G | E, F, G | BREAK O' DAY , B, C, D | C to F | THE GLORY OF THE SEA , B, C, D | F to E |
| A. H. BEHRND DADDY, F, G, A, B | C to D | BARBARA MELVILLE HOPE A LITTLE COON'S PRAYER, G, A, B | D to E | ONE MORNING VERY EARLY , E, F, G | By to E | A BLACKBIRD'S SONG , C, D, E | C to F |
| T. C. STERNDAL E BENNETT IT'S A BEAUTIFUL DAY, G | D to E | A. H. HOUGHTON NOT UNDERSTOOD, D & F | B to E | CAPTAIN MAC , C, D | G to E | FRIEND O' MINE , F, G, A, B, C | D, E, F, G |
| MAURICK BEELY MUSIC WHEN SOFT VOICES DIE, D, E, F, G | A to E | HERBERT HUGHES I KNOW MY LOVE, E, F | By to E | HILLS OF DONOGAL , A, B, C, D | A to E | UP FROM SOMERSET , B, C, D | A, B, C |
| FREDK. BEVAN FLIGHT OF AGES, G, A, B, C | B, C, D | JOHN IRELAND HOPE THE HORNBLOWER, G, A, C | D to E | SPRING'S AWAKENING , F, G, A, B, C | By to F | SHIPMATE O' MINE , F, G, A | G to D |
| MAY H. BRAHE BLESS THIS HOUSE, B, C, E | A to E | M. KENNEDY-FRASER THE ROAD TO THE HILLS, G, A, B | C to D | BEYOND THE DAWN , B, C, D, E | A to E | VALLEY OF LAUGHTER , E, F, G | C to F |
| A. HERBERT BREWER THE FAIRY PIPERS, F, G, A, B, C | By to C | AN ERISKAY LOVE LULLAY , E, G an A | B, C, D | MY DEAR SOUL , A, B, C | By to E | UNTIL , D, E, F, G | D, E, F |
| G. WAKEFIELD COWMAN AT DAWNING, E, F, G, A, B | B to D | ISLAND SHELLEY SONG , G, A, A | B to E | DRAKE GOES WEST , C, D, F | C to D | THE VOYAGER , D, E, F, G | F, G, A |
| ERIC COATES STONECRACKER JOHN, D, E | A to D | LAND OF HEARTS DESIRE , D, E, F, G | A to D | COMPANY SERGEANT-MAJOR , B, C, D | By to D | NIGHTINGALE OF JUNE , D, E, F | C to G |
| B. COLLIERIDGE-TAYLOR BIG LADY MOON, D, E, F | By to E | BOB EPARS , E, F, G | C to E | DYONSHEIRE CREAM AND CIDER , C, D, E | G to D | THE LITTLE BROWN OWL , C, D, E | B to E |
| F. H. OWEN BORER BALLAD, A, B, D | C to E | LIZA LENMANN IF I BUILT A WORLD FOR YOU, C, E, F | C to C | YOU ALONG O' ME , A, B, C | A to D | CHARM ME ASLEEP , G, A, C | B to E |
| FRANCIS GOREL GARDEN OF YOUR HEART, F, A, B | B to D | LAURA G. LEMON MY AIN FOLK, D, E, F, G | A, B, C | LAUGHING CAVALIER , A, B | By to F | LOOKING FOR YOU , F, G, A, B | C to F |
| EDWARD ELGAR IN THE DAWN, C, E, E | C to E | S. LITTLE ARIDE WITH ME, C, D, E, F, G | D to D | AS I SET HERE , D, E, F | C to F | BYWAYS , D, E | By to E |
| HOWARD FISHER AN OLD VIRGIL, F, G, A, B | C to F | PAUL LINGKE CASTLES IN THE AIR, E | By to E | OLD MAN NOAH , E | By to E | ARTHUR COMERVELL SONGS FROM TENNYSON'S "Maud" (6-) | By to E |
| DOUGLAS GRANT OLD BARTY | By to D | R. LOUGHBOROUGH A SONG TO THE NIGER, C, D, E, F | D to F | W. H. SQUIRE WHEN YOU COME HOME, D, E, F, G | A to D | WHEN YOU COME HOME , D, E, F, G | A to D |
| A. E. GRIMSHAW THE SONGS MY MOTHER SANG, D, E, F | A to E | G. J. ACMURROUGH MACUSHLA, F, A, B, E | C to E | IN AN OLD FASHIONED TOWN , C, D, E, F, G | A to D | THE WATCHMAN , C, D, E | G to D |
| HAMILTON HARTY SEA WRACK, B, C, D | By to E | E. A. HARGETSON TOMMY LAD, C, D, E | A to D | IF I MIGHT COME TO YOU , F, G, A, B, C | C to C | SERGEANT OF THE LINE , F, G, A | A to C |
| BATTISON HAYNES OFF TO PHILADELPHIA, C, D | G to D | CHARLES MARSHALL I HEAR YOU CALLING, G, A, B, C | D to E | MOUNTAIN LOVERS , B, C, D, E, F | By to D | MY PRAYER , C, D, E, F, G | A to C |
| K. HERON-MAXWELL KLEP ON HOPIN', C, E, F | C to D | JOSEPHINE MCGILL DUNA, C, D, E | C to E | G. V. STANFORD DRAKE'S DRUM, C and D minor | By to D | SONGS OF THE SEA (4-) | By to D |

The public performance of any parodied versions of the above Songs, etc., is strictly prohibited.

Sole Selling Agents:

BOOSEY & HAWKES (AUST.) PTY. LTD. 250 Pitt Street, Sydney